

Wohnhaus in Eigeltingen – Rorgenwies

House in Eigeltingen - Rorgenwies

The existing house and barn form the southern end of the village. This situation will basically remain, and both buildings will be extended with additions. The typical form of this region, the addition or extension, will be assessed and developed into a building type. This type has a individual modern appearance which forms a contrast to the existing buildings and surroundings.

Construction and materials:

In-situ concrete frames with timber infill

Das bereits vorhandene Wohnhaus und die Scheune bilden den südlichen Abschluß des Dorfes. Die Situation wird grundsätzlich so belassen und die beiden Gebäude werden durch Zubauten ergänzt. Das Charakteristikum dieser Gegend, der Zubau oder die Hausergänzung, wird kultiviert und zu einem Typus weiterentwickelt. Dieser Typus hat

eine eigenständige, moderne Erscheinung, die zum Bestand und

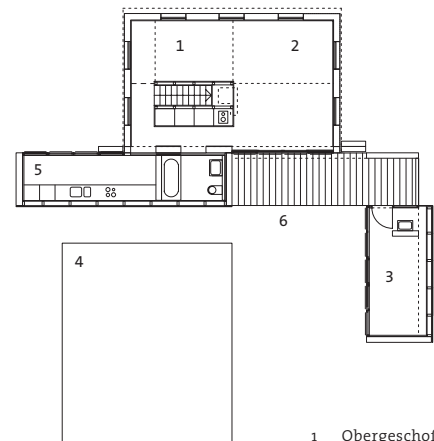
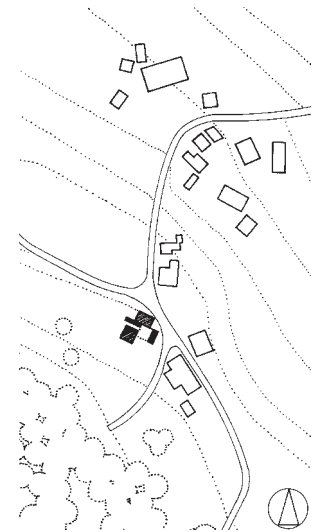
zur weiteren Umgebung einen Kontrast bildet.

Konstruktion und Material:

»... *büro für architektur* has an Eames-like attitude toward the use of industrialised building systems. They prefer materials to be left in their »prime state« with the minimum of applied finishes. This honesty toward material use is sometimes pitched against another Eames's device, the playful application of colour to enliven space. Bfa's attitude toward material is tempered by the specifics of site and program. This is clearly demonstrated in the Rorgenwies Residence located near Lake Constance in Germany. In this house, a type of Interlocking occurs between the blocks of new accommodation and the two existing buildings. The language of the new addition contrasts with that of the existing house.

New and old are held in suspension, the blocks clearly signalling an architecture of the present. Within the existing building, internal walls were removed to create a large living space, its volume following the profile of the pitched roof. Blocks of new accommodation have been carefully placed against the edge of the existing building. Similar to the fire station in Auenwald, finishes are left in their prime state. Solid and void surfaces articulate implied interlocking and slippage between interior, exterior and the existing buildings. The blocks could be thought of as Kahn-like servant spaces, serving the living areas of the existing house with a bathroom, a kitchen and a guest room.«

Richard Black
in *Monument 28* –



- 1 Obergeschoß
Schlafebene
- 2 Wohnraum
- 3 Gast / Arbeitszimmer
- 4 Scheune
- 5 Küche / Bad
- 6 Veranda

Bauherr
U. Hack, Restauratorin

Ausführung:
1994-1997

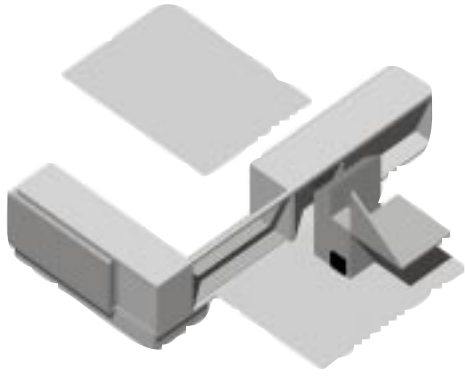
Baukosten
245.000 DM (325 cbm)

Nutzung Einraum-
Wohnhaus mit Küche,
Bad und Atelier

Statik
Büro Wieland
Herr Meissner
Pfedelbach-Untergleichen

Bauphysik
Prof. H. Baumgartner
Winnenden



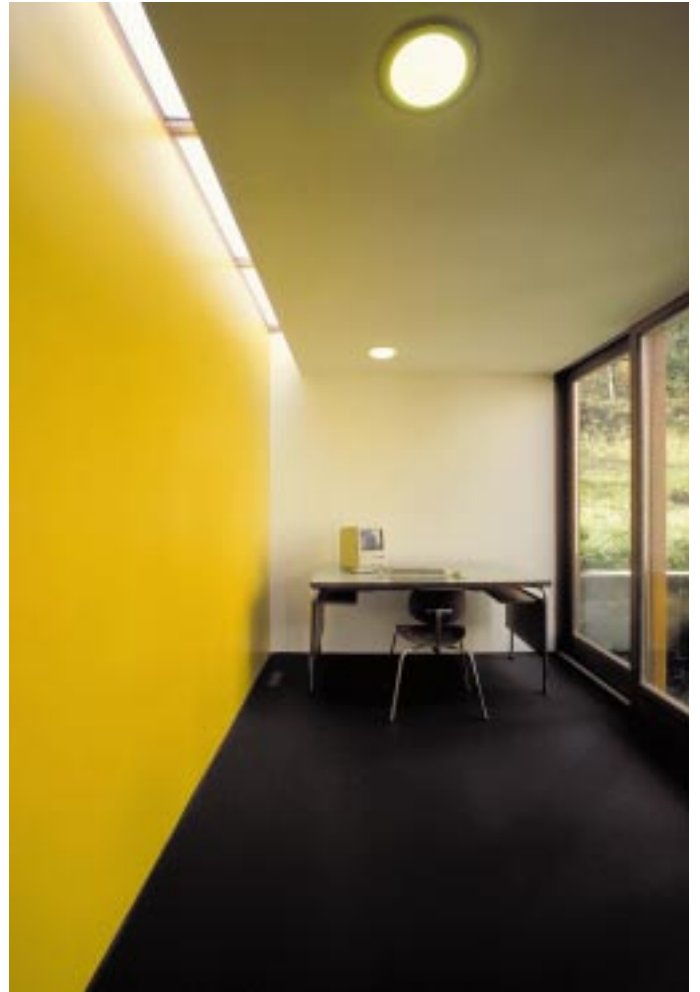


Isometrie
Anbauten





Küche



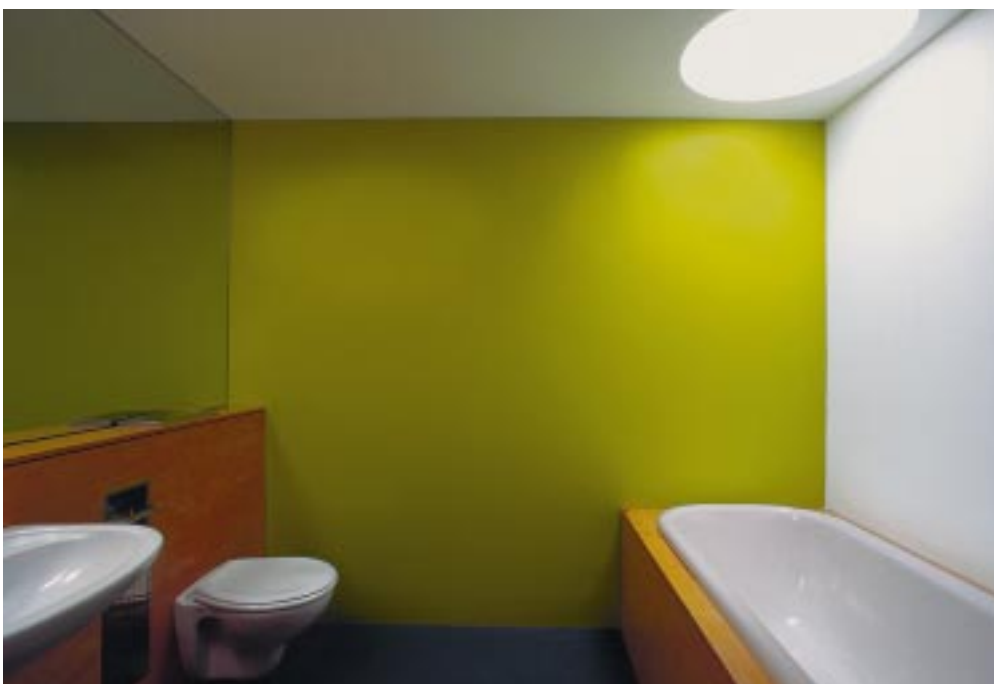
Arbeits / Gästezimmer



Detail Galerie



Schlafebene



Bad

büro für architektur

Johannesstraße 60
D-70176 Stuttgart

fon

0711 / 234 97 12

0711 / 236 18 11

fax

0711 / 234 97 11

e-mail

bfa@bfa-online.de

internet

www.bfa-online.de